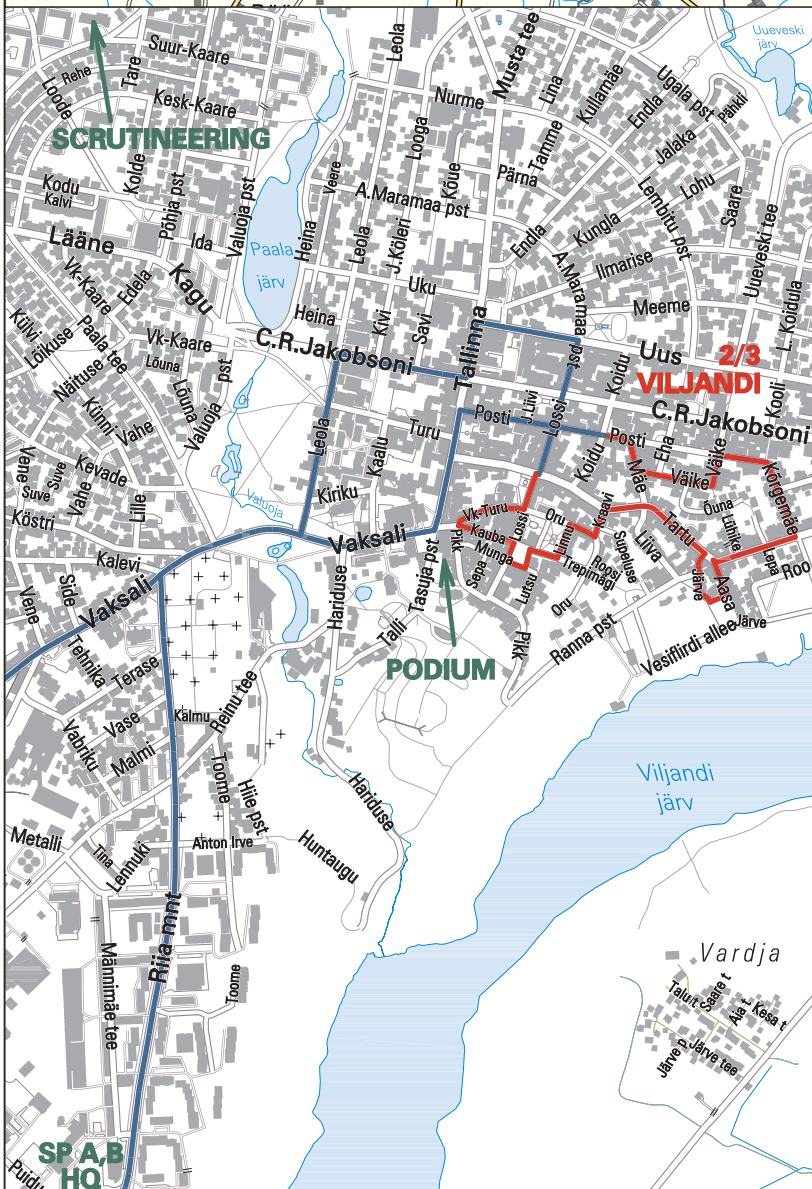
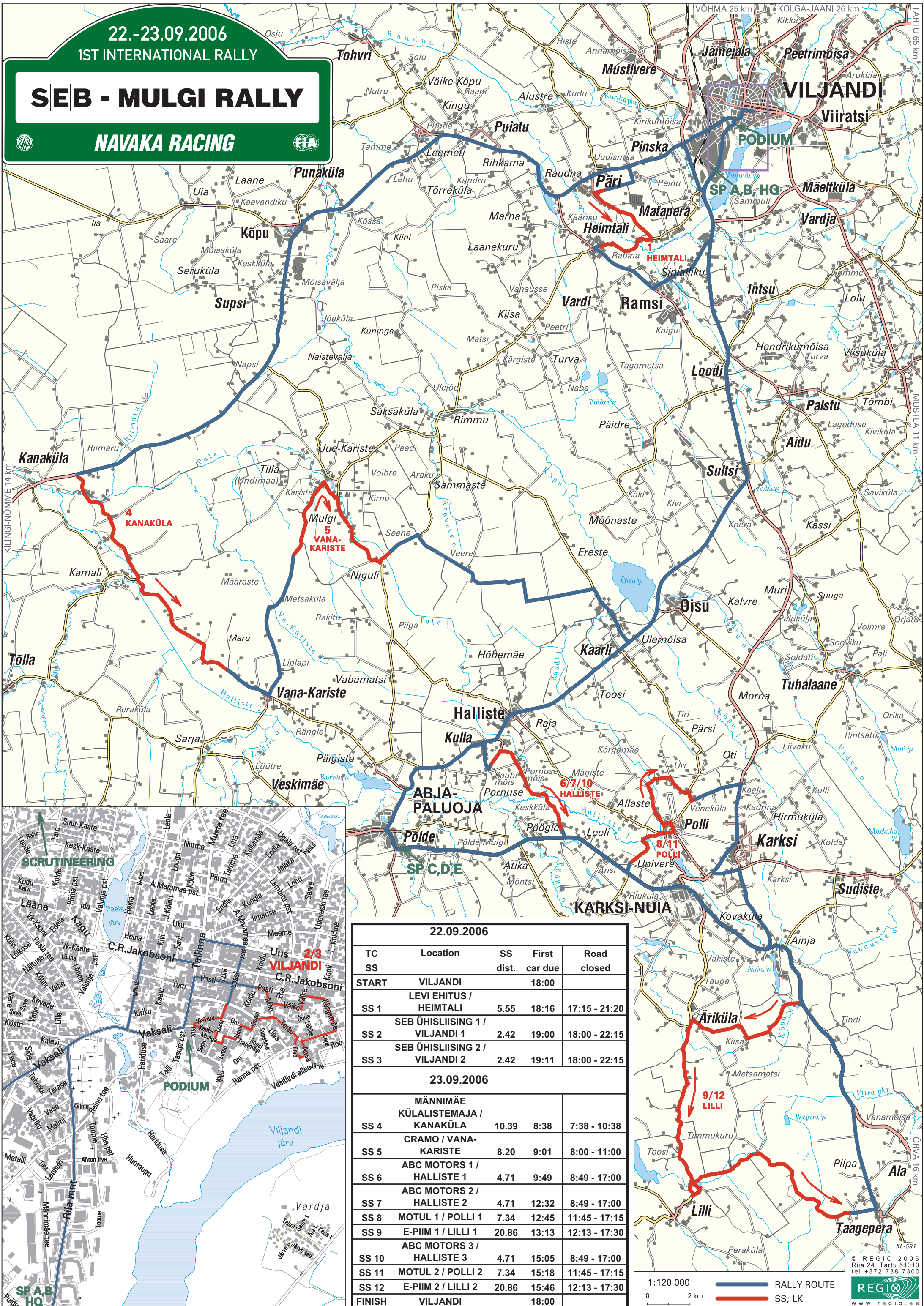


22.-23.09.2006
1ST INTERNATIONAL RALLY

SEB - MULGI RALLY

NAVAKA RACING



22.09.2006				
TC	Location	SS dist.	First car due	Road closed
START	VILJANDI		18:00	
SS 1	LEVI EHITUS / HEIMTALI	5.55	18:16	17:15 - 21:20
SS 2	SEB ÜHISLIISING 1 / VILJANDI 1	2.42	19:00	18:00 - 22:15
SS 3	SEB ÜHISLIISING 2 / VILJANDI 2	2.42	19:11	18:00 - 22:15
23.09.2006				
SS 4	MÄNNIMÄE KÜLALISTEMAJA / KANAKÜLA	10.39	8:38	7:38 - 10:38
SS 5	CRAMO / VANA-KARISTE	8.20	9:01	8:00 - 11:00
SS 6	ABC MOTORS 1 / HALLISTE 1	4.71	9:49	8:49 - 17:00
SS 7	ABC MOTORS 2 / HALLISTE 2	4.71	12:32	8:49 - 17:00
SS 8	MOTUL 1 / POLLI 1	7.34	12:45	11:45 - 17:15
SS 9	E-PIIM 1 / LILLI 1	20.86	13:13	12:13 - 17:30
SS 10	ABC MOTORS 3 / HALLISTE 3	4.71	15:05	8:49 - 17:00
SS 11	MOTUL 2 / POLLI 2	7.34	15:18	11:45 - 17:15
SS 12	E-PIIM 2 / LILLI 2	20.86	15:46	12:13 - 17:30
FINISH	VILJANDI		18:00	