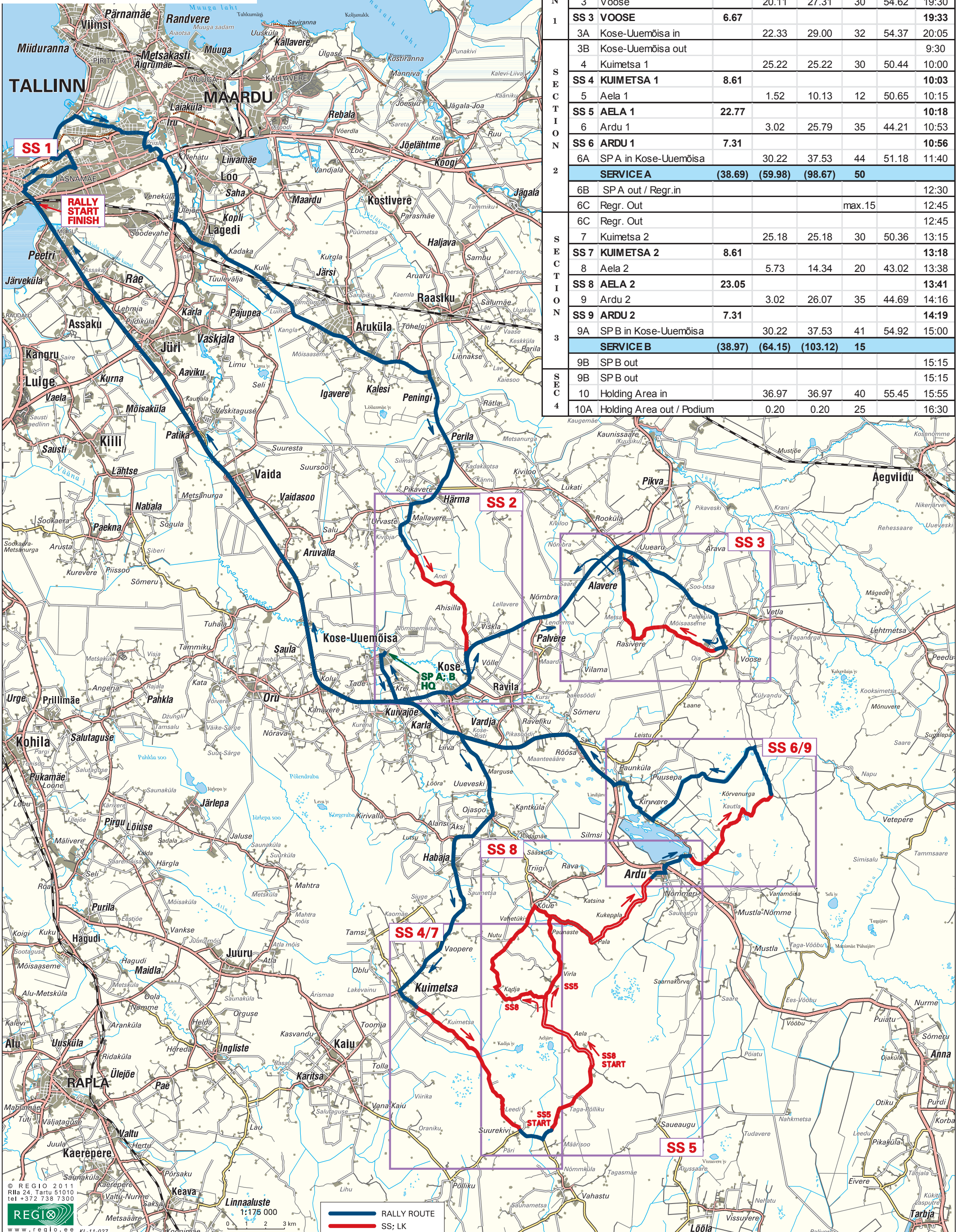


2011

RAHVUSVAHELINE

HONDA TALLINNA RALLI

The Power of Dreams



Road Sec	TC SS	Location	SS dist.	Liaison dist.	Total dist.	Target time	Aver speed	First car due
SECTION 1	0	Ülemiste out						17:30
	1	LAULUVÄLJAK / START		7.00	7.00	27	15.55	17:57
	SS 1	LAULUVÄLJAK	1.60					18:00
	2	Pikavere		40.45	42.05	57	44.26	18:57
	SS 2	PIKAVERE	7.20					19:00
SECTION 2	3	Voose		20.11	27.31	30	54.62	19:30
	SS 3	VOOSE	6.67					19:33
	3A	Kose-Uuemõisa in		22.33	29.00	32	54.37	20:05
	3B	Kose-Uuemõisa out						9:30
	4	Kuimetsa 1		25.22	25.22	30	50.44	10:00
SECTION 3	SS 4	KUIMETSA 1	8.61					10:03
	5	Aela 1		1.52	10.13	12	50.65	10:15
	SS 5	AELA 1	22.77					10:18
	6	Ardu 1		3.02	25.79	35	44.21	10:53
	SS 6	ARDU 1	7.31					10:56
SECTION 4	6A	SPA in Kose-Uuemõisa		30.22	37.53	44	51.18	11:40
	SERVICE A		(38.69)	(59.98)	(98.67)	50		
	6B	SPA out / Regr.in						12:30
	6C	Regr. Out				max.15		12:45
	6C	Regr. Out						12:45
SECTION 5	7	Kuimetsa 2		25.18	25.18	30	50.36	13:15
	SS 7	KUIMETSA 2	8.61					13:18
	8	Aela 2		5.73	14.34	20	43.02	13:38
	SS 8	AELA 2	23.05					13:41
	9	Ardu 2		3.02	26.07	35	44.69	14:16
SECTION 6	SS 9	ARDU 2	7.31					14:19
	9A	SPB in Kose-Uuemõisa		30.22	37.53	41	54.92	15:00
	SERVICE B		(38.97)	(64.15)	(103.12)	15		
	9B	SPB out						15:15
	9B	SPB out						15:15
SECTION 7	10	Holding Area in		36.97	36.97	40	55.45	15:55
	10A	Holding Area out / Podium		0.20	0.20	25		16:30